

WIRELESS FORMS

Eliminate paperwork costs, delays, errors, headaches, and clutter via digital forms and checklists.



JOB DISPATCHING

Serve more customers and accelerate response time with digital work order management.



MOBILE TIMEKEEPING

Enhance productivity and eliminate costly DT & OT by enabling employees to clock in/out on devices.



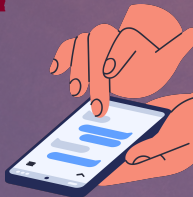
GPS TRACKING

Protect investments from risk of theft and mis-use by monitoring locations of valuable resources.



INTRA-COMPANY MESSAGING

Strengthen employee understanding by communicating real-time project updates.



THE 5 MUST-USE FEATURES OF TEAMWHERX[®]